

# ChipScan-ESA

## Analysis Software for Spectrum Analyzers

Langer EMV-Technik GmbH is a German company that focuses on research, development, production and further training in the field of electromagnetic compatibility (EMC).

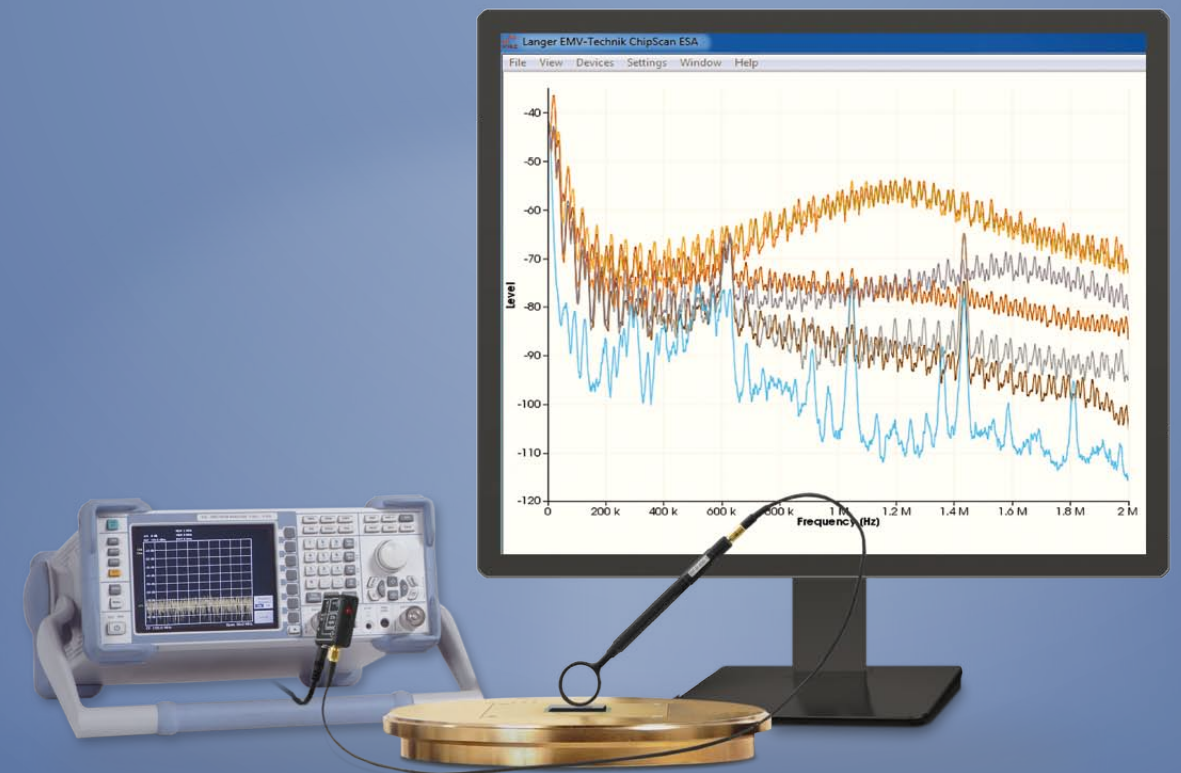
Our interference emission and interference immunity EMC measurement technology as well as the IC test system are used mainly in the development stage and are in worldwide demand.

The EMC knowhow and measurement technology from Langer EMV-Technik GmbH allow developers and designers

to gain new insights into and establish more efficient work strategies for module and IC development.

The individual consultancy services provided by Langer EMV-Technik GmbH in the field of EMC during development help developers and designers find solutions to complex EMC problems in IC, device and module development fast.

We make our research results and comprehensive EMC know-how available to the public via practical experimental EMC seminars and in-house events.



**Langer EMV-Technik GmbH**  
Noethnitzer Hang 31  
01728 Bannewitz  
Germany

Phone: +49(0) 351 430093-0  
Fax : +49(0) 351 430093-22

Email: [mail@langer-emv.de](mailto:mail@langer-emv.de)  
[www.langer-emv.com](http://www.langer-emv.com)



© Langer EMV-Technik GmbH, 2017



## ChipScan-ESA – an universal tool

With ChipScan-ESA, you can monitor all your spectrum analyzer measurements at any time. Measurements can easily be managed and quickly subjected to detailed analyzes, which

considerably reduces the effort required for development documentation. Consequently, time and development costs are saved.

ChipScan-ESA is particularly suitable for measurements with

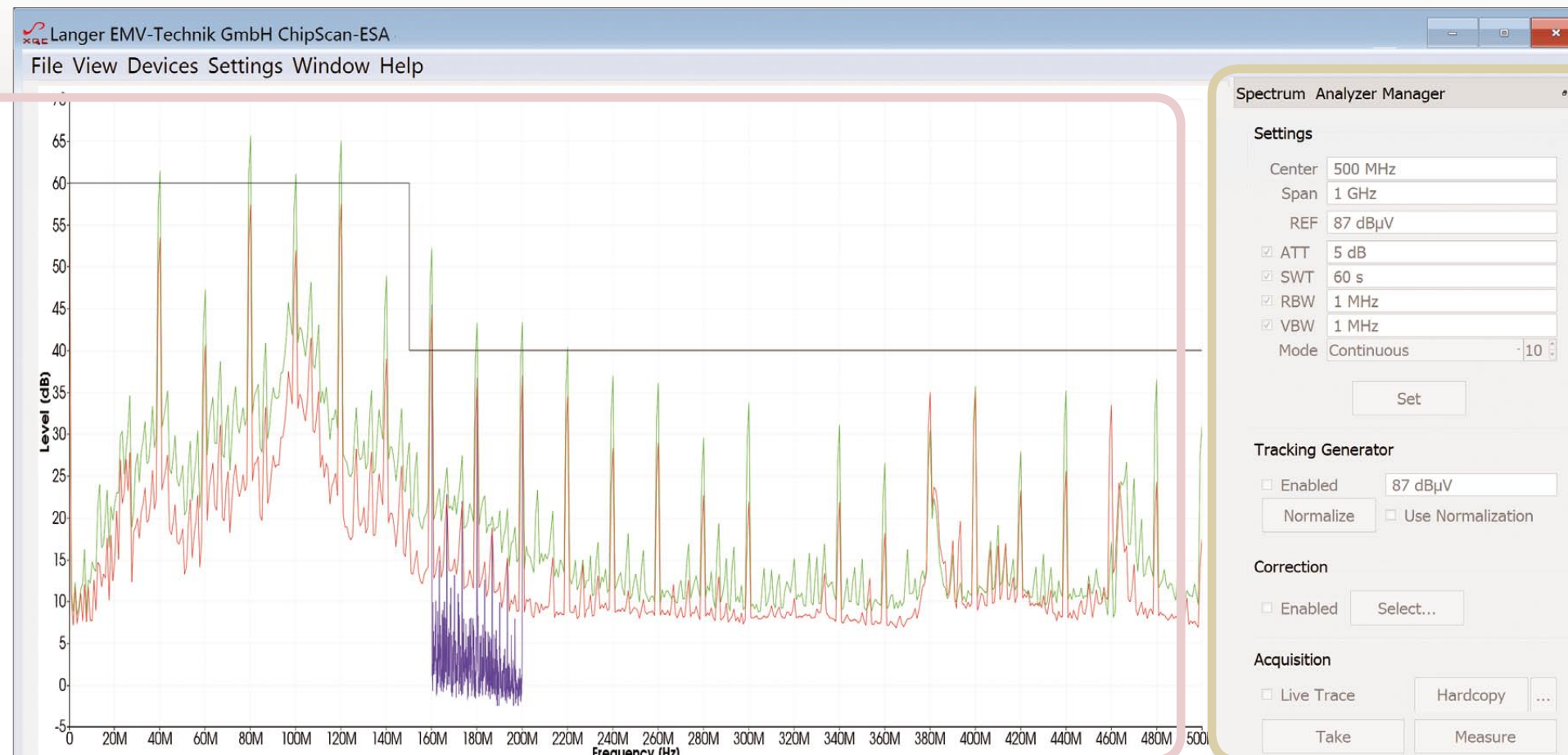
- a TEM-cell
- an antenna
- a coupling clamp
- probe tips
- a strip line
- a network simulation
- near-field probes
- a RF-transformer
- ICs according to the 1 Ohm and 150 Ohm methods

### Quick visualization of results

- Compare all acquired spectra
- Linear and logarithmic view
- Import and display of limit value curves
- Continuous zoom for detailed analysis
- Marking of harmonics

### Live visualization (live trace)

- Real-time visualization of the measuring signal
- Immediate application of correction curves

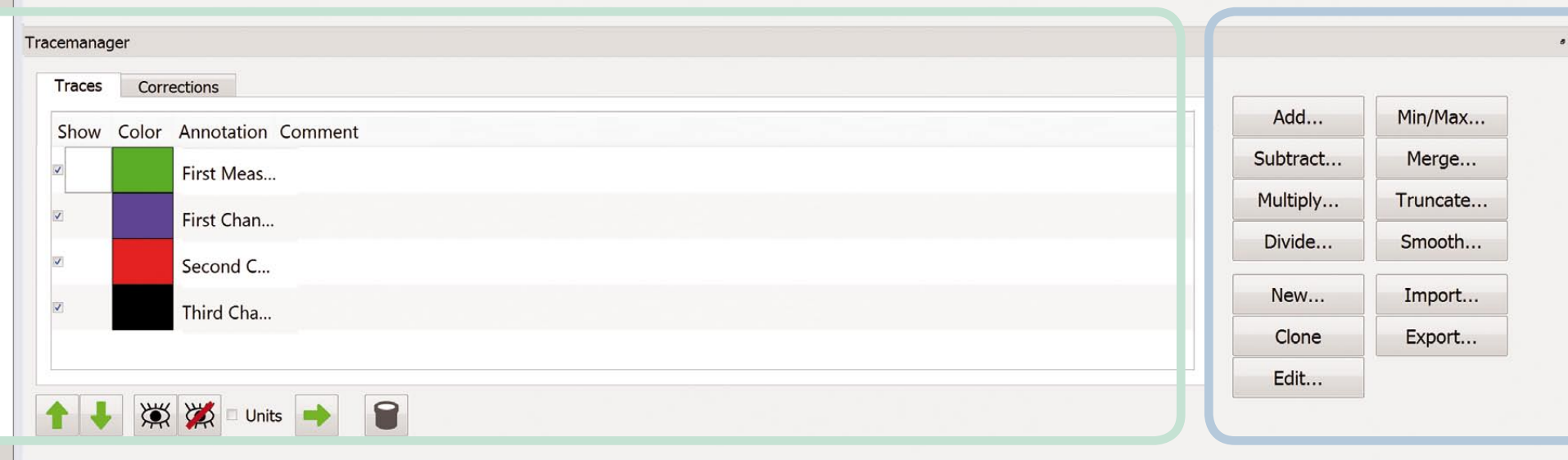


### Configuration of the Spectrum Analyzer

- Control of important settings of spectrum analyzer (Center, span, etc.)
- Save settings
- Supports various spectrum analyzers of different manufacturers
- Supports tracking generators and normalization

### Data processing and analysis

- Application of correction curves during and after the measurement
- Application of operators (addition, smoothing, ...)



### Documentation

- Storage of any number of spectra in a single file
- Image export for documentation / presentation
- Data export for a detailed statistical analysis using Excel, R-lab, or Matlab